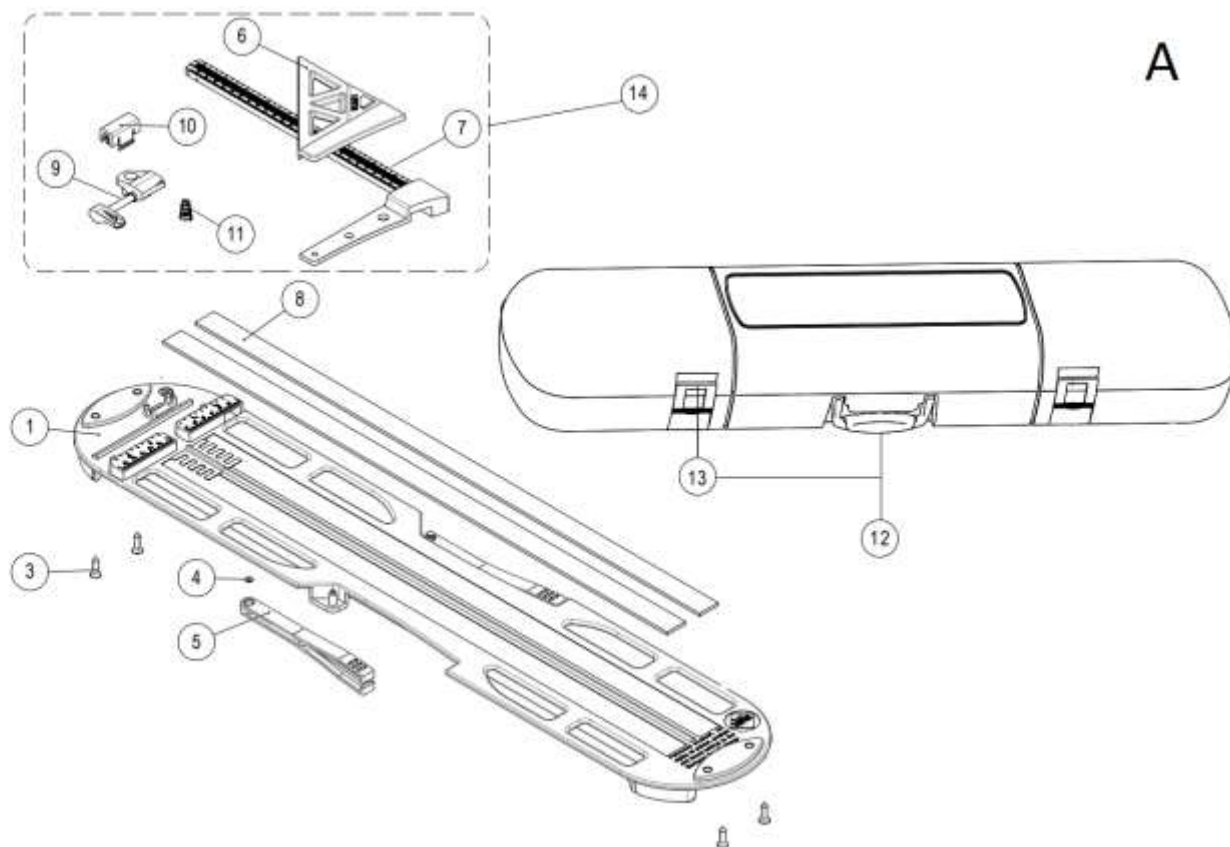


| Part-list | ES | EN                      | Prod.            |
|-----------|----|-------------------------|------------------|
| 1         | A  | GRUPO BASE              | BASE GROUP       |
| 2         | B  | GRUPO GUIAS             | GUIDE GROUP      |
| 3         | C  | GRUPO PORTAHERRAMIENTAS | TOOLHOLDER GROUP |

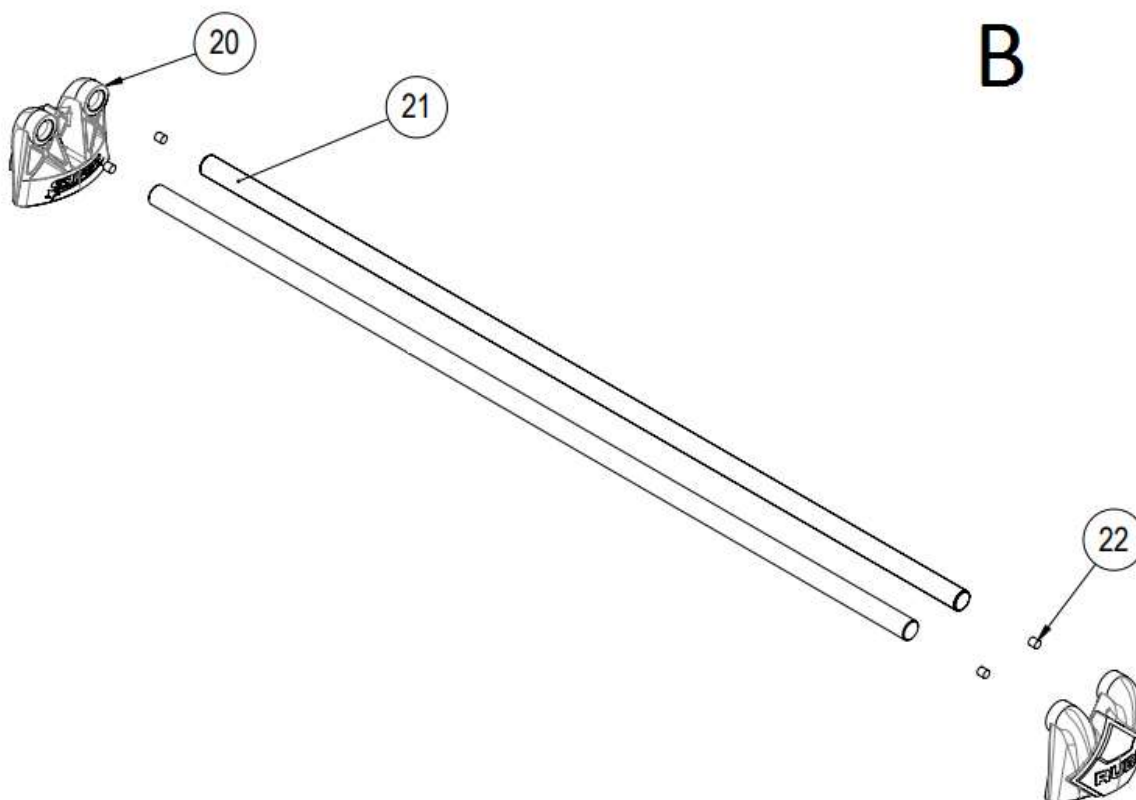
| Prod. | ES                                    | EN                               | From serial num. |
|-------|---------------------------------------|----------------------------------|------------------|
| 14901 | STAR-51 LATAM -CORTADOR MANUAL        | STAR-51 LATAM                    | ST109099         |
| 14902 | STAR-63 LATAM -CORTADOR MANUAL        | STAR-63 LATAM                    | ST109099         |
| 14903 | STAR-51 CON MALETA LATAM -CORT.MANUAL | STAR-51 WITH CARRYING CASE LATAM | ST109099         |
| 14904 | STAR-63 CON MALETA LATAM -CORT.MANUAL | STAR-63 WITH CARRYING CASE LATAM | ST109099         |
| 14943 | STAR-42 -CORTADOR MANUAL              | STAR-42                          | ST109099         |
| 14944 | STAR-51 -CORTADOR MANUAL              | STAR-51                          | ST109099         |
| 14945 | STAR-63 -CORTADOR MANUAL              | STAR-63                          | ST109099         |
| 14946 | STAR-42 CON MALETA -CORTADOR MANUAL   | STAR-42 WITH CARRYING CASE       | ST109099         |
| 14947 | STAR-51 CON MALETA -CORTADOR MANUAL   | STAR-51 CON MALETA               | ST109099         |
| 14948 | STAR-63 CON MALETA -CORTADOR MANUAL   | STAR-63 WITH CARRYING CASE       | ST109099         |

Queda reservado el derecho de introducir cualquier modificacion técnica sin previo aviso

We reserve the right to introduce any technical modification without previous notice

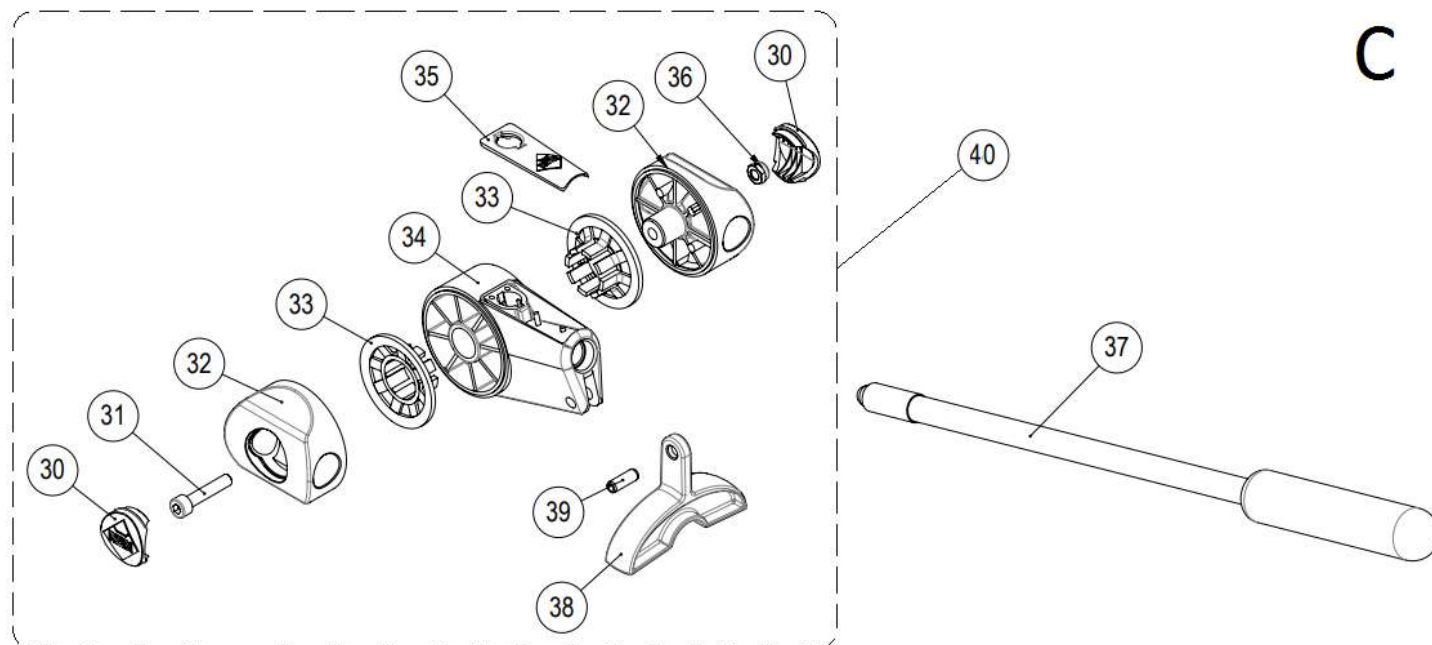


| Part-list |       | ES |                                       | EN                                   | Prod.                      |
|-----------|-------|----|---------------------------------------|--------------------------------------|----------------------------|
| 1         | 12201 | 1  | BASE STAR-40-N                        | BASE STAR-40-N                       | 14946, 14943, 14904, 14902 |
| 1         | 12222 | 1  | BASE STAR-50-N                        | BASE STAR-50-N                       | 14947, 14944, 14903, 14901 |
| 1         | 12383 | 1  | BASE STAR-60-N                        | BASE STAR-60-N                       | 14948, 14945               |
| 3         | 12629 | 4  | TORN DIN 7982 ST4,8X19 RA-82 6.8 ZN   | SCREW DIN 7982 ST4,8X19 RA-82 6.8 ZP |                            |
| 4         | 12353 | 2  | ARAND A3X10X3,8 ARANLOCK              | WASHER A3X10X3,8 ARANLOCK            |                            |
| 5         | 12212 | 2  | PIE DE APOYO STAR-N                   | LEG STAR-N                           |                            |
| 6         | 13436 | 1  | SUPLEMENTO 45° V2                     | 45° SUPPLEMENT V2                    | 14901, 14902, 14903, 14904 |
| 7         | 12213 | 1  | GUIA TOPE LATERAL STAR-N PLUS         | LATERAL TOP GUIDE STAR-N PLUS        | 14901, 14902, 14903, 14904 |
| 8         | 12261 | 2  | TIRA GOMA STAR-40                     | RUBBER BAND STAR-40                  | 14946, 14943               |
| 8         | 12262 | 2  | TIRA GOMA STAR-50                     | RUBBER BAND STAR-50                  | 14947, 14944, 14903, 14901 |
| 8         | 12315 | 2  | TIRA GOMA STAR-60                     | RUBBER BAND STAR-60                  | 14948, 14945, 14904, 14902 |
| 9         | 12214 | 1  | PULSADOR STAR-N PLUS                  | PUSH STAR-N PLUS                     | 14901, 14902, 14903, 14904 |
| 10        | 12215 | 1  | TAPA PULSADOR STAR                    | PUSH COVER STAR                      | 14901, 14902, 14903, 14904 |
| 11        | 12216 | 1  | MUELLE STAR-N PLUS                    | SPRING STAR-N PLUS                   | 14901, 14902, 14903, 14904 |
| 12        | 12872 | 1  | CJ.MALETA STAR-40-N                   | CASE SET STAR-40-N                   | 14946                      |
| 12        | 12874 | 1  | CJ.MALETA STAR-50-N                   | CASE SET STAR-50-N                   | 14947                      |
| 12        | 12876 | 1  | CJ.MALETA STAR-60-N                   | CASE SET STAR-60-N                   | 14948                      |
| 13        | 15758 | 2  | CIERRE MALETA 46X38 STAR              | PLASTIC LATCH 46X38 FOR STAR         |                            |
| 14        | 12923 | 1  | SUPLEMENTO ESCUADRA STAR/N/N-PLUS/MAX | SQUARE SUPPLEMENT STAR/N/N-PLUS/MAX  | 14901, 14902, 14903, 14904 |



| Part-list |       |   | ES                    | EN                    | Prod.                      |
|-----------|-------|---|-----------------------|-----------------------|----------------------------|
| 20        | 13058 | 2 | SOPORTE GUIAS STAR V2 | GUIDE SUPPORT STAR V2 |                            |
| 21        | 13076 | 2 | GUIA Ø 15 L=635       | GUIDE DIA.15 L=635    | 14947, 14944, 14903, 14901 |
| 21        | 13075 | 2 | GUIA Ø 15 L=550       | GUIDE DIA.15 L=550    | 14946, 14943               |
| 21        | 13059 | 2 | GUIA Ø 15 L=726       | GUIDE DIA.15 L=726    | 14948, 14945, 14904, 14902 |
| 22        | 15136 | 2 | TACO GOMA Ø 6X6       | RUBBER STOPPER 6X6    |                            |

C



| Part-list  | ES                                | EN                             | Prod. |
|------------|-----------------------------------|--------------------------------|-------|
| 30 12217 2 | TAPON CORREDERA STAR-N PLUS ROJO  | SLIDER COVER STAR-N PLUS RED   |       |
| 31 12309 1 | TORN DIN 912 M5X25 6.8 ZN         | SCREW DIN 912 M5X25 6.8 ZP     |       |
| 32 12205 2 | CORREDERA STAR-N PLUS             | SLIDER STAR-N PLUS             |       |
| 33 13155 2 | EMBOLO FRENO SPEED                | BRAKE STAR/SPEED               |       |
| 34 12230 1 | PORTAHERRAM.STAR                  | TOOLHOLDER                     |       |
| 35 12350 1 | TAPA PORTAHERRAM.R V2             | TOOLHOLDER COVER/R V2          |       |
| 36 40045 1 | TUERCA DIN 985 M5 CL8 ZN AUTOBLOC | HEX LOCK NUT DIN 985 M5 CL8 ZP |       |
| 37 11290 1 | CJ.MANGO RAPID-STAR/R             | CJ.RED HANDLE                  |       |
| 38 12292 1 | PISADOR STAR                      | BREAKING FEET STAR             |       |
| 39 12293 1 | PASADOR DIN 1481 Ø 5X14           | ELASTIC SPINDLE DIN 1481 5X14  |       |
| 40 12819 1 | CJ.PORTAHERRAM.STAR-N PLUS        | TOOL HOLDER STAR-N PLUS        |       |